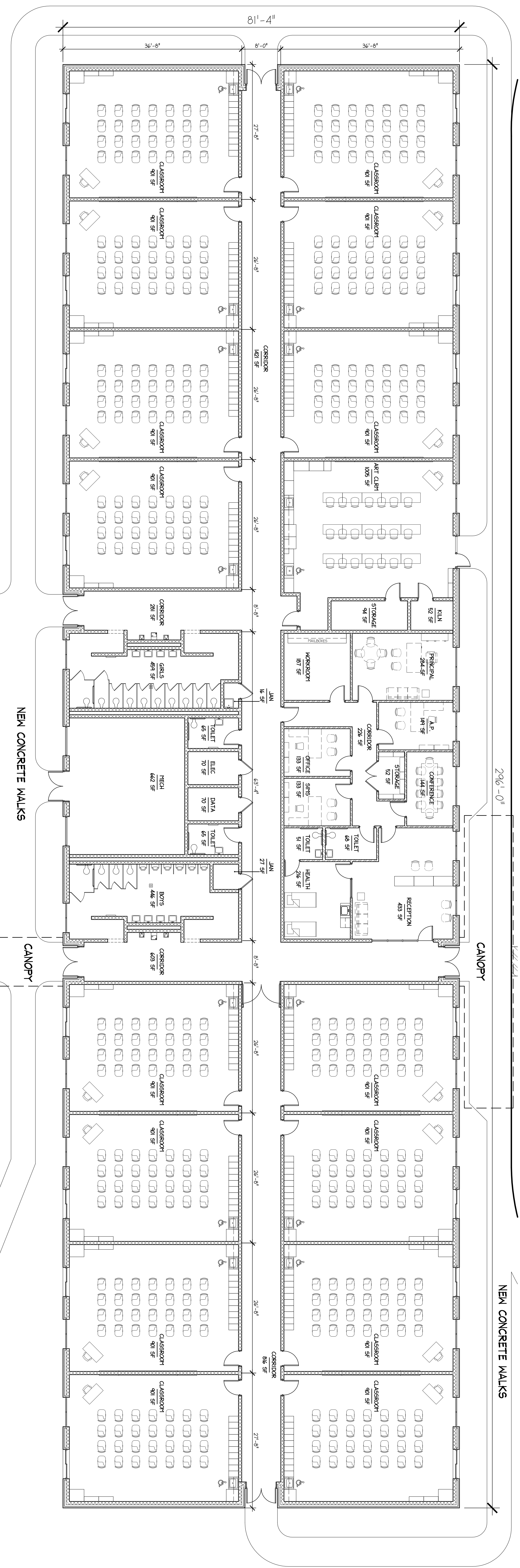
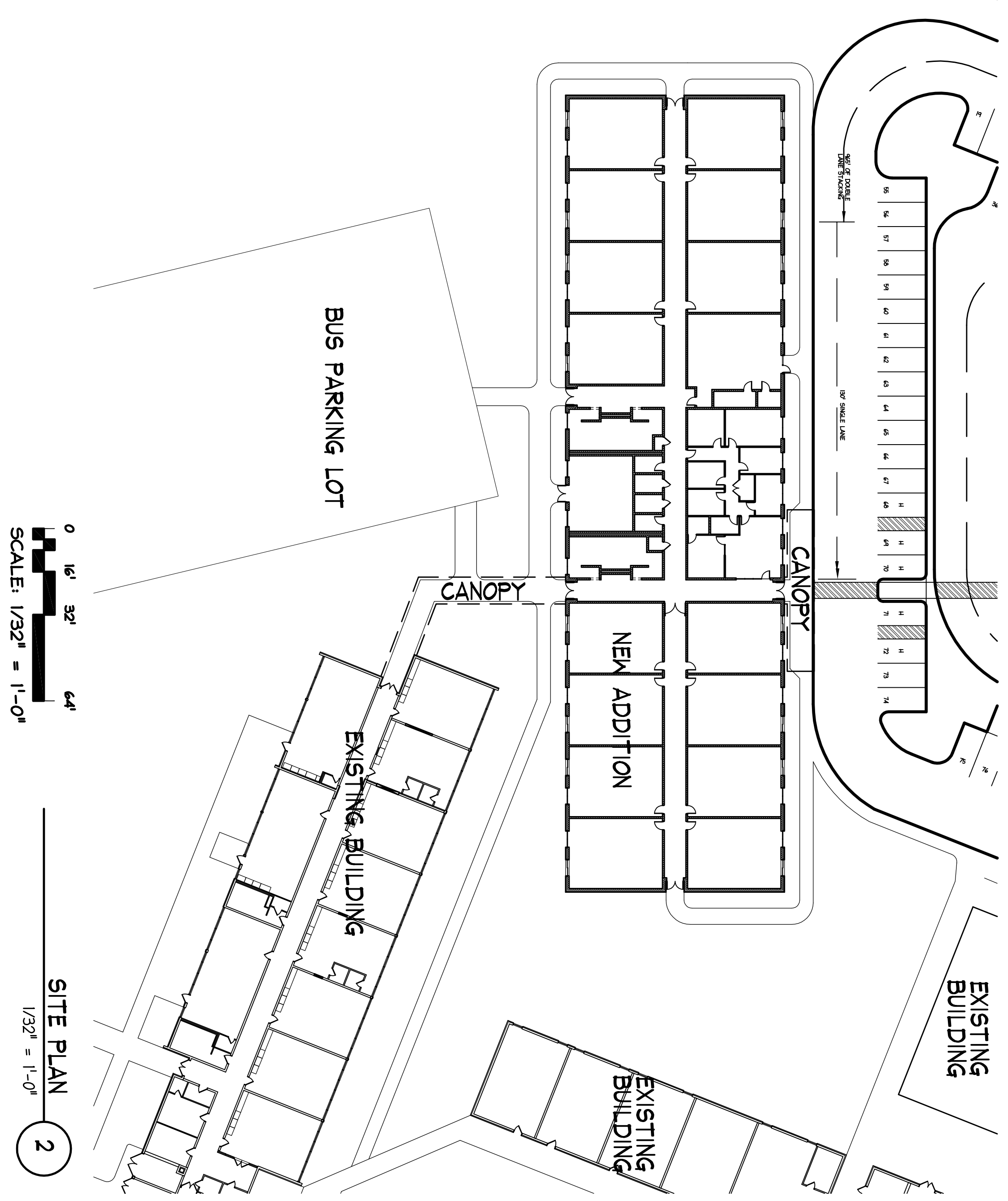


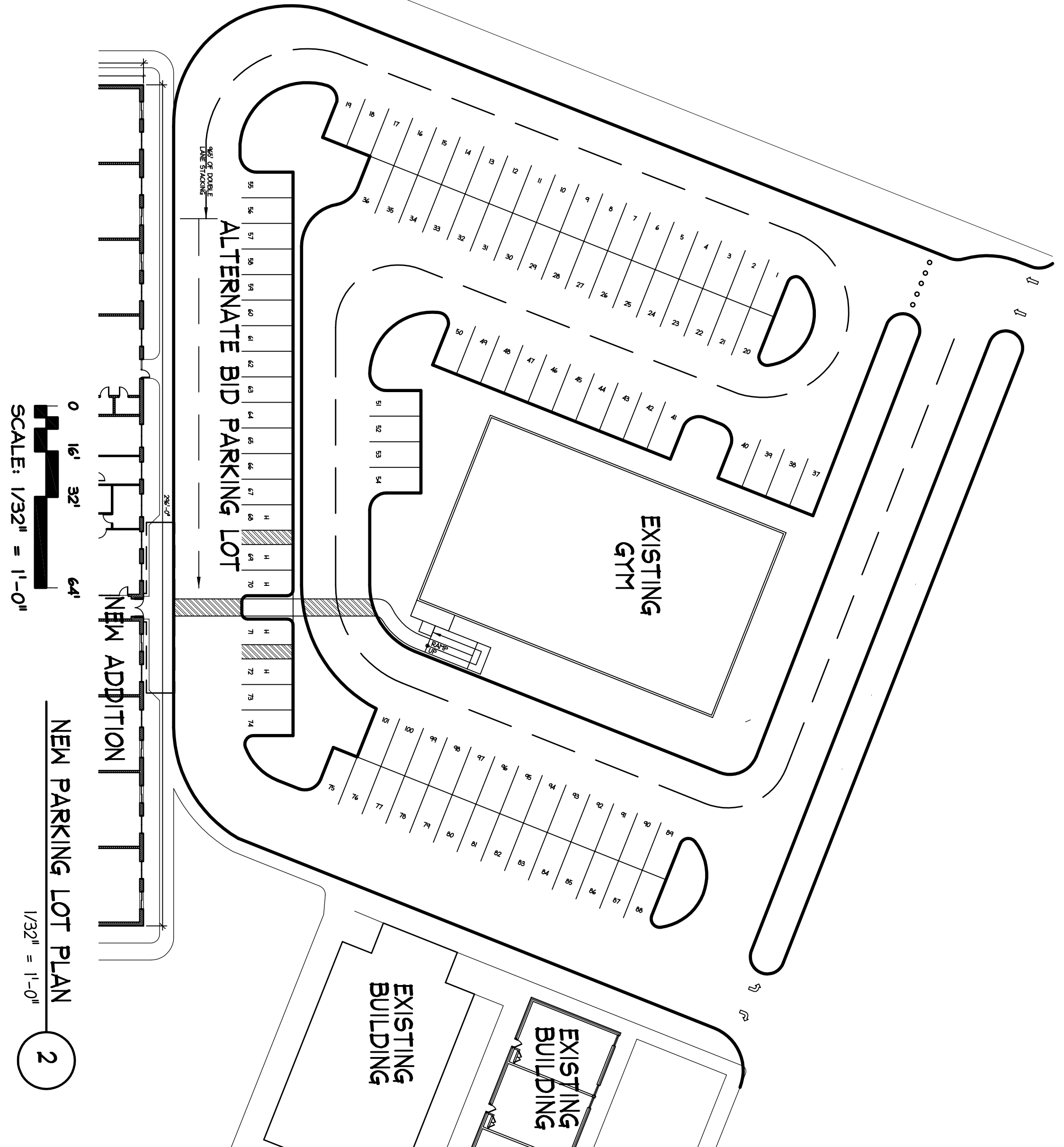
CARTERET COUNTY PUBLIC SCHOOL SYSTEM
NEWPORT ELEMENTARY SCHOOL; CLASSROOM & ADMINISTRATION ADDITION
FLOOR PLAN - SEPTEMBER 06, 2006



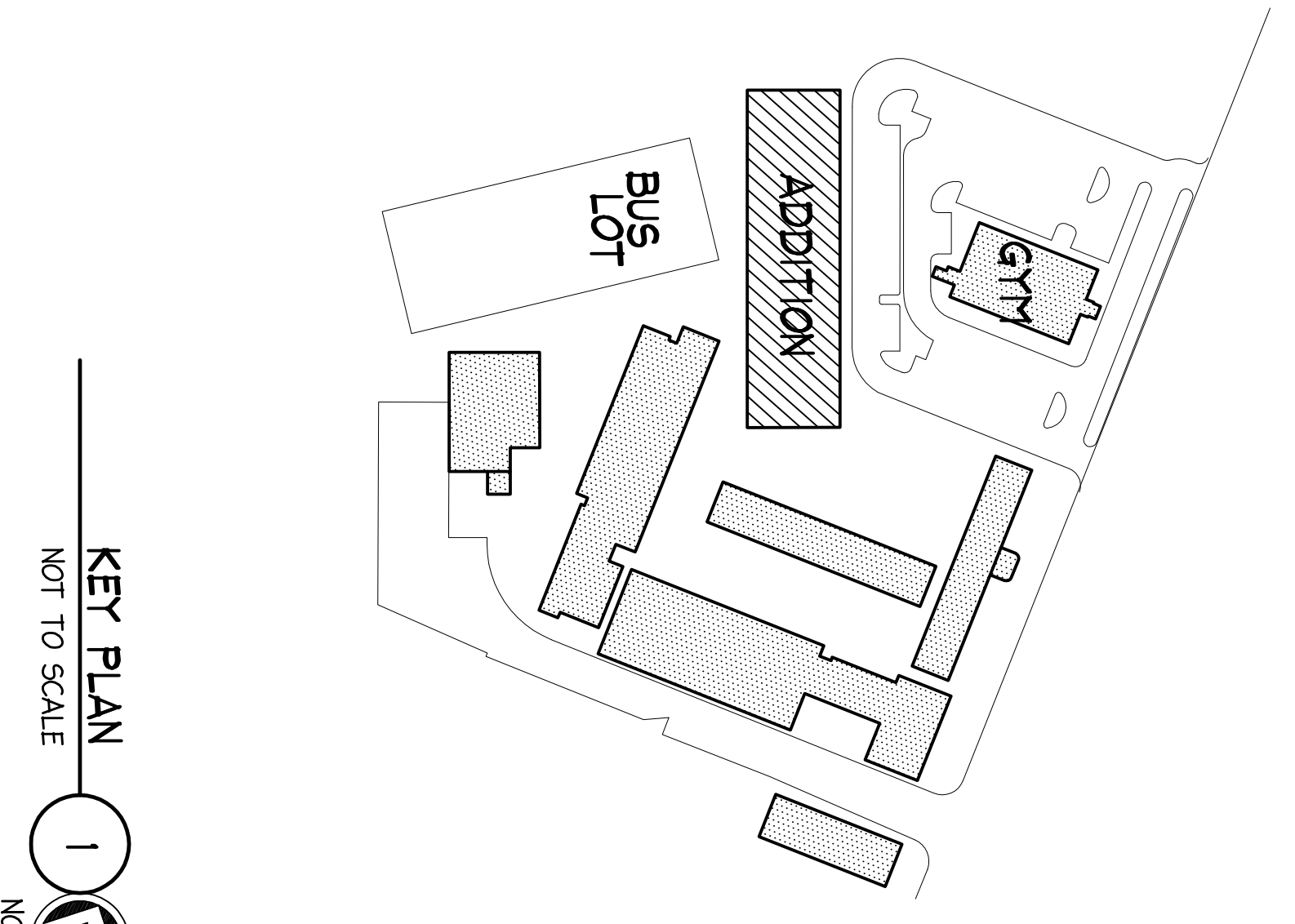
FLOOR PLAN
 1/8" = 1'-0"
 0 4 8 16



SITE PLAN
 1/32" = 1'-0"
 0 16' 32' 64'



NEW PARKING LOT PLAN
 1/32" = 1'-0"
 0 16' 32' 64'



KEY PLAN
 NOT TO SCALE
 NORTH